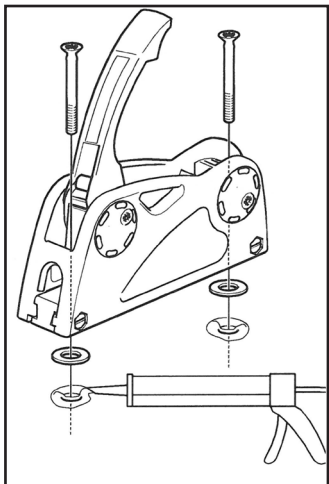


Manual for Rope Clutch RC 750HPX & RC 75X

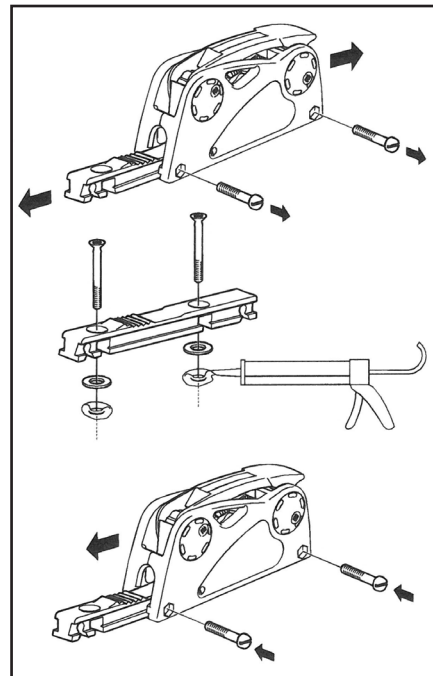
Alternative A

1. Lift up the rope clutch lever. Mark holes, $c-c = 79 \text{ mm}$ (3.11 in), for the M6 machine screws and drill.
2. Apply sealant around the holes. Place Rutgerson cup washers over the sealant.
3. Push the M6 screws into the rope clutch holes, through the sealing washers and into the drilled holes.
4. Fit washers and tighten nuts on the underside of the deck.



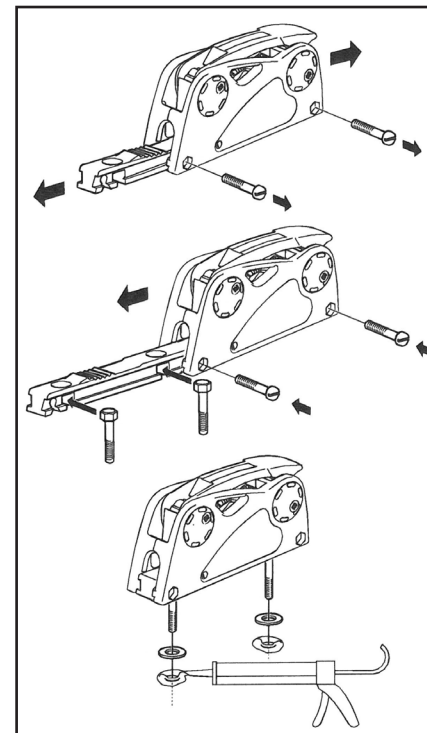
Alternative B

1. Loosen the base plate by removing the two M5 allen screws. Then slide off the bottom plate. Mark the holes, $c-c = 79 \text{ mm}$ (3.11 in), for the M6 machine screws and drill.
2. Apply sealant around the holes. Place Rutgerson cup washers over the sealant.
3. Push the M6 screws into the base plate holes, through the sealing washers and into the drilled holes.
4. Fit washers and tighten nuts on the underside of the deck.
5. Slide the body of the rope clutch onto the base plate and tighten the two M5 allen screws.

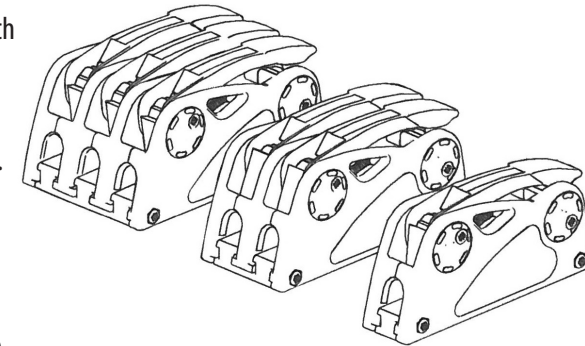


Alternative C

1. Loosen the base plate by removing the two M5 allen screws. Then slide out the base plate. Mark the holes, $c-c = 79 \text{ mm}$ (3.11 in) for the bolts (stainless steel M6 bolts with hexagonal heads) and drill.
2. Push the heads of the M6 hexagonal bolts into the grooves on the base plate. Then slide the base plate back into the body of the rope clutch and tighten with the two M5 allen screws.
3. Apply sealant around the drilled out holes. Place Rutgerson cup washers over the sealant.
4. Push the M6 bolts (now attached to the rope clutch) through the sealing washers and into the drilled holes.
5. Fit washers and tighten nuts on the underside of the deck.



Rutgerson Marin AB©
Mjölkeliksgatan 21,
442 66 Marstrand, Sweden
Phone: +46 (0) 303 20 66 50
Fax: +46 (0) 303 608 89
www.rutgerson.se
E-mail: postmaster@rutgerson.se



Instructions for Rutgerson Rope Clutch RC 750HPX & RC 75X

Rope Clutch RC 750HPX & RC75X

General The RC 750HPX and RC 75X rope clutch is of the coupling type and can be used for boats up to approx. 45 feet. Despite the compact design, the RC 750HPX and RC 75X will take rope diameters of 8–12 mm (5/16–15/32 in) and can safely hold a load of 750 kg (1650 lbs). The sheave in the rear edge is fitted with a low friction, plain bearing of composite plastics.

Fitting The rope clutch has three different fitting options:

Option A. Fitting of the rope clutch in the traditional manner with countersunk machine screws.

Option B. Separate fitting of the rope clutch base plate with countersunk machine screws. Advantage, easier fitting.

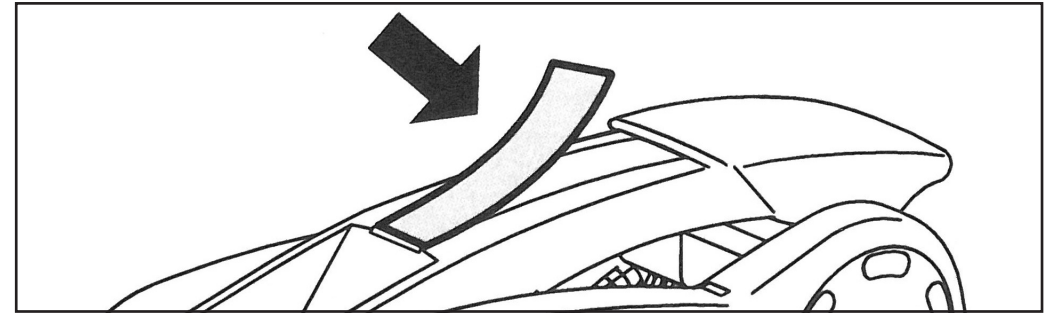
Option C. Separate fitting of the rope clutch base plate with hexagon bolts. Advantage, the rope clutch can be fitted by one person, no counter-force required.

NB. The rope clutch must be placed with the sheave nearest to the winch. The triple version of the RC 750HPX and RC 75X has six fitting holes. Only the outer four of these need to be used when fitting.

Operation After installation, raise the lever and insert rope from the front (sheave at rear). Fully close the lever and pull rope through until the required setting is reached. The cam is now engaged and will hold the rope securely at the setting. To release the rope, simply raise the lever.

NB. To increase rope working life, take the loaded rope onto a winch before release.

Endless lines The RC 750HPX and RC75X rope clutch is ideal for use with endless ropes eg Furling lines. Remove the set screws from the side of clutch and slide the clutch body off the base plate. Hold the endless line in the body of the clutch with the lever raised. Re-fit the clutch and tighten the set screws.



Marking Mark rope clutches with our UV resistant labels. Clean the recess in the lever with solvent for better label adhesion.

Maintenance Rinse the rope clutch with fresh water.

Service For service please contact an authorised dealer.

Warranty All Rutgeron rope clutches carry a 3 year warranty against defects in manufacture.

Service sets for RC 750HPX and RC 75X

Five different service kit with replacement parts are provided for the RC 750HPX & RC 75X rope clutch.

	Art. No.
No. 1: Replacement handle (lever)	S600015
No. 2: Spring set (b)	S600010
No. 3: Cam, 8-12mm (0.31-0.47in) (c)	S600025
No. 4: Rope clutch labels (d)	S600001
No. 5: Sealent - Cupwashers (e)	T609006

