

Manual for Genoa traveller with stopper on Genoa track with stop holes

General

The genoa travellers can be smoothly adjusted under load, thanks to a new composite bearing material which is fitted between traveller and track.

This new composite bearing material is also used in the twin sheaves, spreading the sheet load in the same way as one much larger single sheave.

The genoa blocks move in two planes to ensure the optimal sheeting angle whilst minimising chafe and wear on all components.

The Genoa system comes in two versions:

- Traveller with plunger stop for track with stop holes (see drawing).
- Towable traveller with control line sheave for track with concealed fastenings (see drawing).

Maintenance

Apart from rinsing the fittings occasionally with fresh water, genoa sheet system requires no other maintenance.

Warranty

All deck fittings from Rutgerson Marin carry a three year warranty against defects in materials manufacture.

1. Fitting of Genoa track with stop holes:

Place the track on the deck and mark out the holes. Light bending of the genoa track can be accomplished by hand.

Drill the holes for the M8 screws.

Apply sealant around the holes. Place Rutgerson sealing cup washers over the sealer.

Push the screws (stainless steel M6 machine screws, DIN 963, 965) into the track holes, through the sealing washers and into the drilled holes.

Fit the washers and tighten the nuts on the underside of the deck.

2. Fitting the Genoa traveller:

Slide genoa traveller onto the track with the plunger stop facing forward. Lift the plunger knob and rotate 90° to lock in floating position. The traveller is now free to slide without restriction. If the traveller is to be fitted with a control line eye, see step 5.

3. Fitting the lead block:

Push the lead block onto the track and lock in place with the socket allen key.

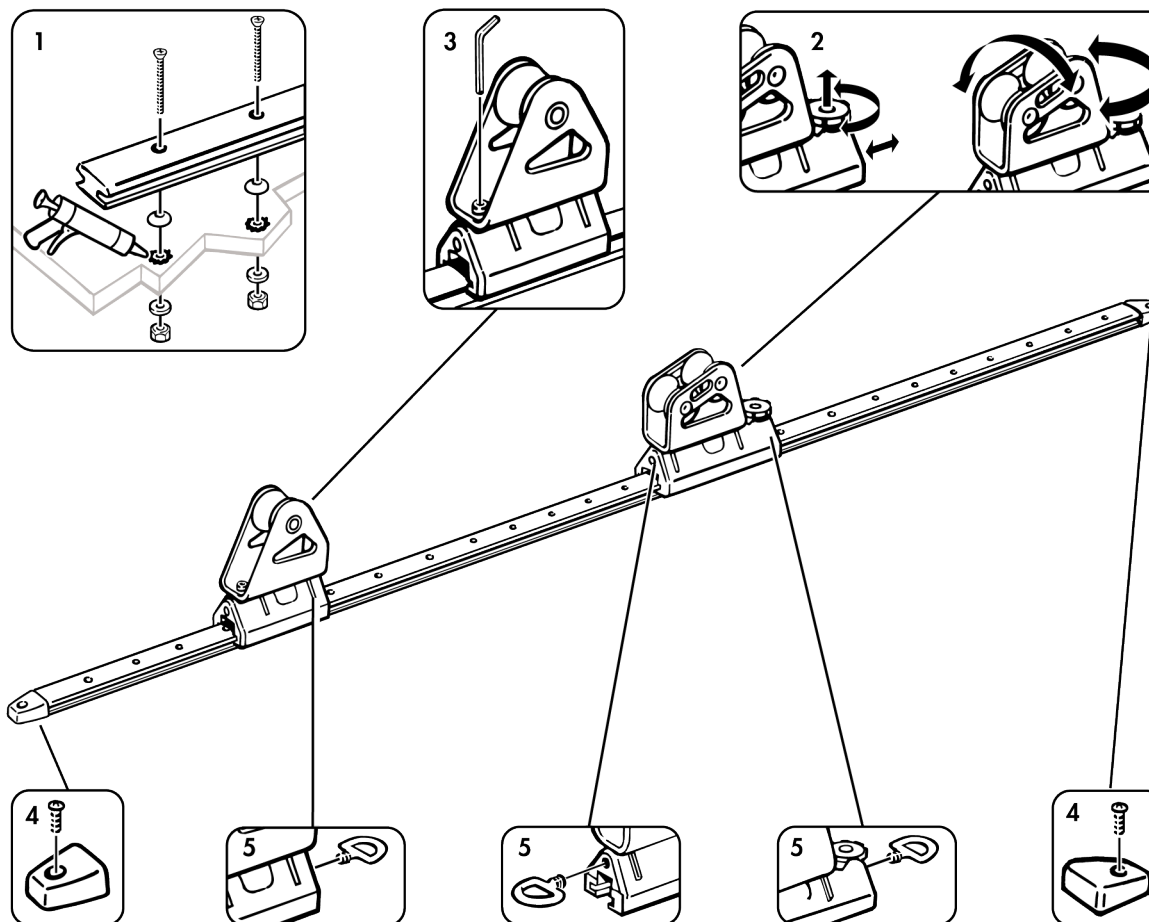
4. Fitting the plastic end stops:

Fit the plastic end stops at both ends of the track.

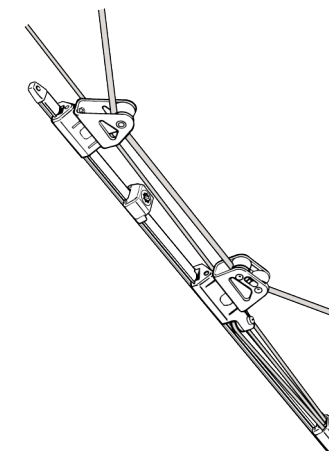
Fasten the stop in position with a 6 mm (0.24 in) stainless steel screw so that it is positioned against the end of the track.

5. Fitting eyes (optional):

Eyes can be attached to the front and/or back of the genoa traveller and onto the front end of the lead block. The eyes are fitted before the traveller is slid onto the track.



Rutgerson Marin AB©
Mjölkeliksgatan 21,
442 66 Marstrand, Sweden
Phone: +46 (0) 303 20 66 50
www.rutgerson.se
E-mail: postmaster@rutgerson.se



Instructions for Rutgerson Genoa System

RUTGERSON
Best in action

Floating Genoa traveller on genoa track with concealed fastenings

1. Fitting of Genoa track with concealed fastenings:

Place the track on the deck and mark out the holes for the bolts (stainless steel M8 bolts with external hexagon heads, DIN 931). Recommended distance between bolts 75 mm (3 in). Light bending of the genoa track can be accomplished by hand.

Push the hexagon heads of the bolts into the groove in the track.

Drill the holes for the M8 bolts in the deck. Apply sealant around the holes. Place Rutgerson sealing cup washers over the sealant.

Push the bolts, whose heads are now held in the track rail, through the sealing washers and into the drilled holes. Fit the washers and tighten the nuts on the underside of the deck.

2. Fitting the control line end stop:

Fit the control line end stop at the forward end of the track.

Unscrew the three upper screws, slide the control line end stop over the track until the end cap is up against the track.

Screw down the screws until they leave a mark in the track. Then remove the control line end stop and drill (with 6 mm/0.24 in. bit) holes into the track.

Slide on the control line end stop again and fasten the three screws in the holes on the track.

3. Fitting the floating Genoa traveller:

Slide the floating genoa traveller onto the track.

The upper part of the traveller can be moved both horizontally and vertically. For fitting eyes on the travellers, see step 7.

4. Fitting the friction stops (optional):

Slide the friction stop onto the track and lock in place with a winch handle.

5. Fitting the lead block:

Push the lead block onto the track and lock in place with the allen key.

6. Fitting the plastic end stops:

Fit the plastic end stop at the other end of the track.

Screw the stop in place with a stainless steel screw so that it is positioned against the end of the track.

7. Fitting eyes (optional):

Eyes can be screwed onto the back of the floating genoa traveller and onto the front end of the lead block. The eyes are fitted before the traveller is slid onto the track.

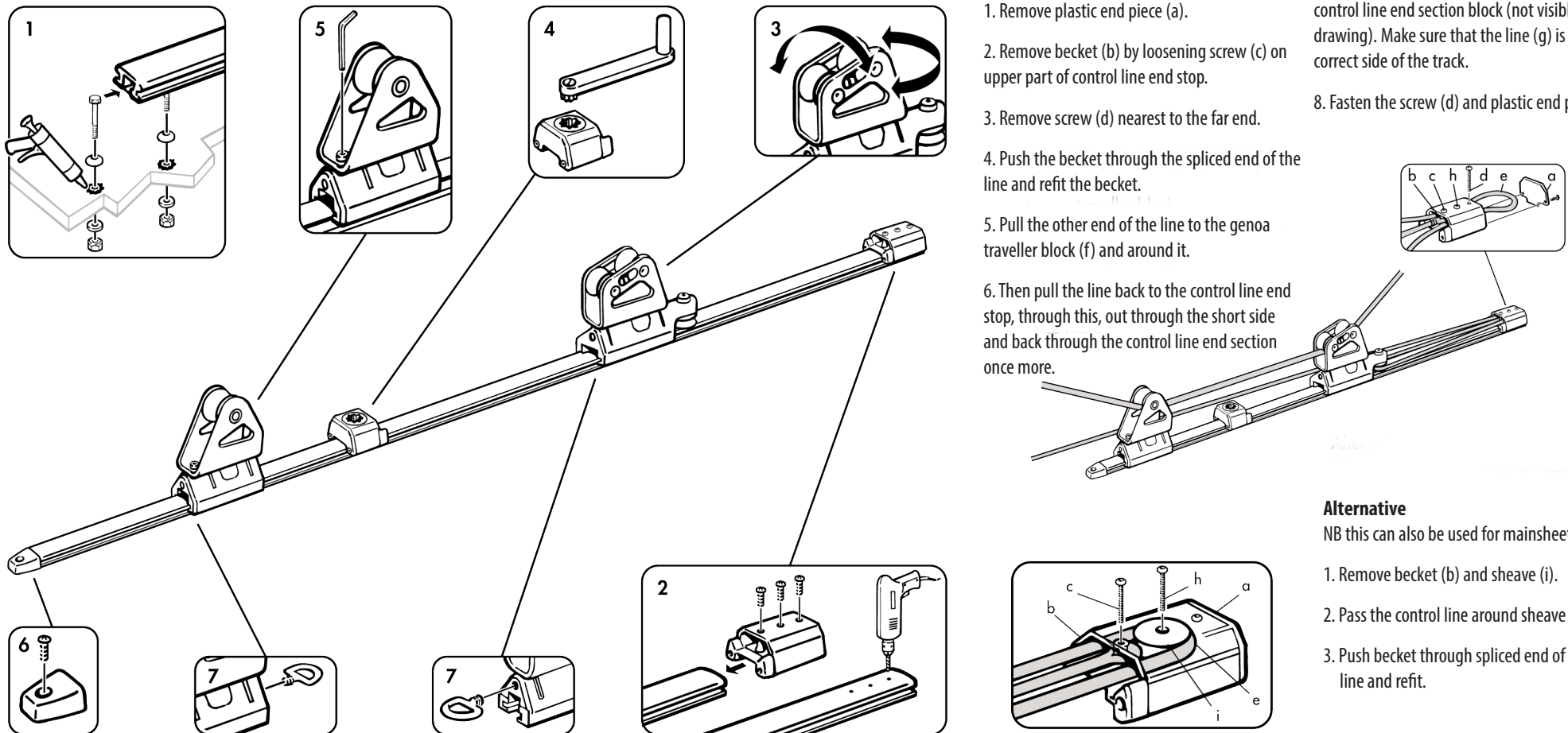
Control line in floating Genoa traveller system

Control line fitting

1. Remove plastic end piece (a).
2. Remove becket (b) by loosening screw (c) on upper part of control line end stop.
3. Remove screw (d) nearest to the far end.
4. Push the becket through the spliced end of the line and refit the becket.
5. Pull the other end of the line to the genoa traveller block (f) and around it.
6. Then pull the line back to the control line end stop, through this, out through the short side and back through the control line end section once more.

7. Allow the loop so formed (e) to run around the control line end section block (not visible in the drawing). Make sure that the line (g) is on the correct side of the track.

8. Fasten the screw (d) and plastic end piece (a).



Alternative

NB this can also be used for mainsheet.

1. Remove becket (b) and sheave (h).
2. Pass the control line around sheave and refit.
3. Push becket through spliced end of control line and refit.