

RUTGERSON

**Rutgerson 32mm
Self-tacking Jib System
manual - English**

Follow these instructions to obtain maximum performance from the Rutgerson self-tacking jib system.

The track has a given optimal placement that is indicated in the instructions below. When the system is in place, it is important to make sure that the holes which are drilled through deck do not enter the main bulk head or hit any wiring. If that should be the case we recommend that you contact us. We would gladly advise you how to proceed.

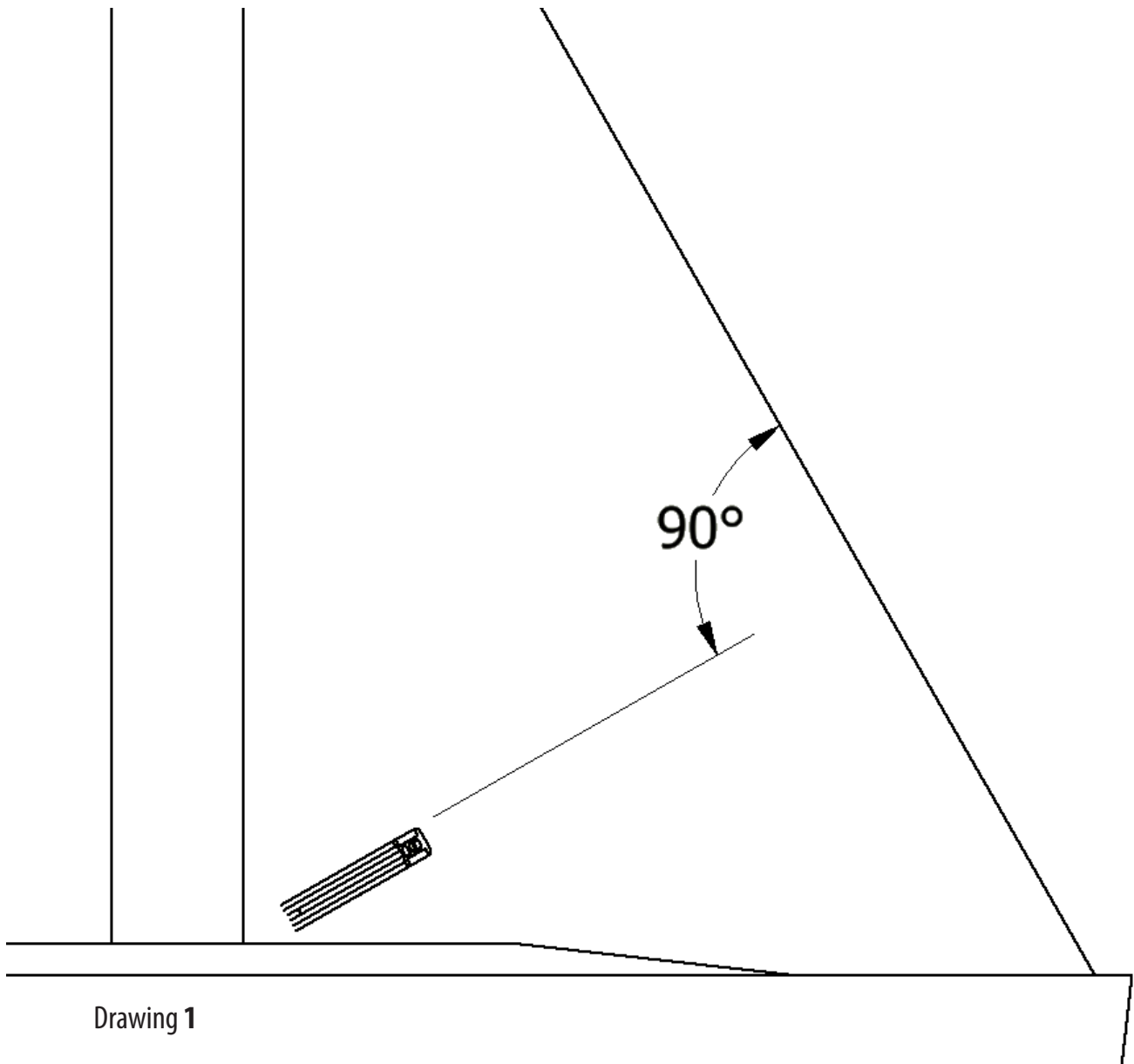
General steps of assembly

1. The track is cut to the correct length, with equal amount in both ends.
2. The track is placed in front of the mast, across the deck so that the upper side of the track is parallel to the head stay.
3. The middle clips are fitted.
4. The end supports are cut to the correct length.
5. The end supports are fitted to the track.
6. The complete system is mounted onto the deck.

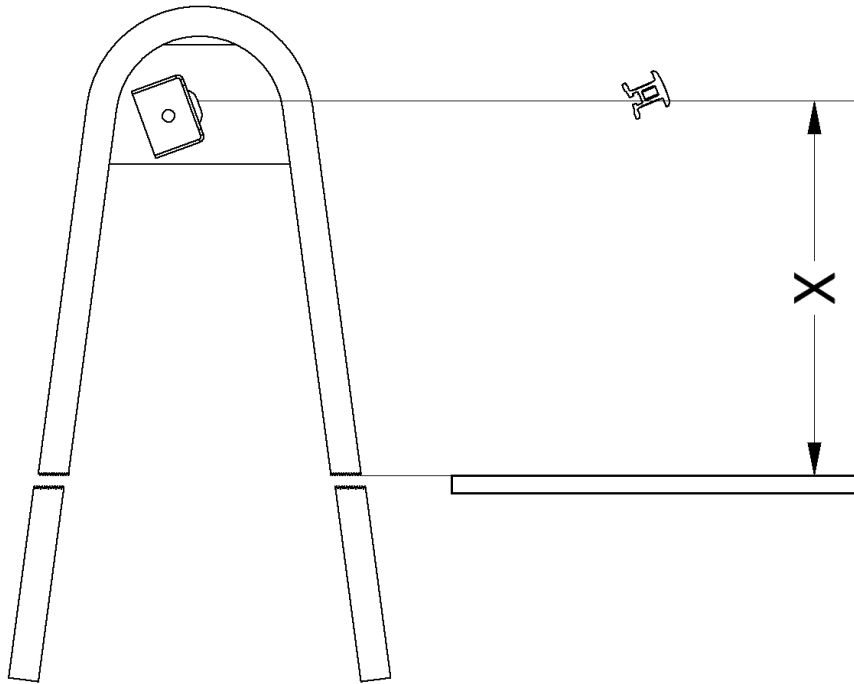
Detailed instructions of assembly

1. Cut the track to the correct length by cutting to equal extent in both ends. The track has the correct length when it extends 80mm outside the sheet angle. It is advisable to compare the length of the existing jib sheet track before cutting the Rutgerson track.
2. Drill a hole of 8,5mm in diameter on the upper side at each end of the track. The hole should be 20mm in from each end.
3. Fit the traveller to the track and fasten it temporarily to the middle with adhesive tape.
4. Place the track so that the top of the track is parallel to the mainstay and make sure it is placed across the deck. (See drawing 1)
5. When the track is in place it is time to determine the placement of the middle clips. By moving them inwards and outwards, the distance between the cabin roof and the track is altered. Make sure that the traveller is not obstructed by the mast or deck, and that both ends of the track have equal height over the deck.
6. Mark and drill recessed holes of 8,5mm in diameter on top of the track for the track bolts.
7. Fit the clips to the track with M8x40 bolts and M8 locking nuts. Do not tighten the bolts.
8. Place the track on deck. Check the distance to the head stay and adjust the clips so that they are flushed against the deck. Adjust the track as in step 4.

9. Mark and drill holes of 6,5mm in diameter for the middle clips through deck. Seal the holes with silicon-rubber.
10. Fit the middle clips with a M6x30 bolt, a washer and a M6 locking nut.
11. Check the position of the track as in step 4 again, and tighten the bolts between the track and the clips.
12. Measure the distance between deck, where you want to place the end supports, and the center of the hole at the under side of the track. (See drawing 2)

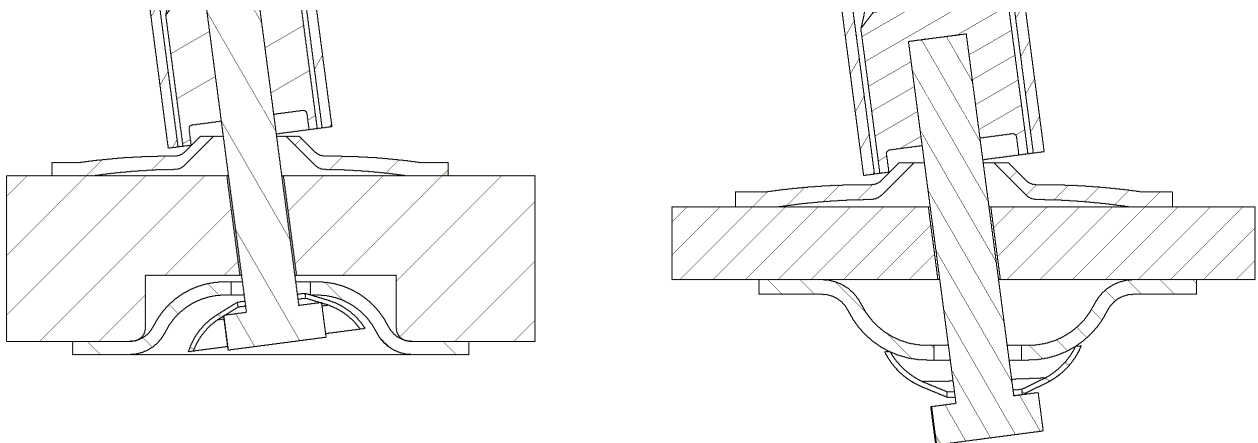


Drawing 1



Drawing 2

13. Transfer this distance to the end supports and cut them accordingly.
14. Drill a hole of 8,5mm in diameter 35mm from each end of the supports. These holes should be drilled longitudinally.
15. Install the assembled system on deck with M8x70 hexagonal bolts, two arched washers and M8 locking nuts.
16. Mark where the holes for the end supports will be on deck. Disassemble the locking nut, bolt, washers, stopper and end supports from each end of the track. Drill the holes with a 8,5mm drill in the same direction as the end support legs.
17. Recess the holes below deck, approximately 38mm in diameter and 10mm deep, so that the bulge of the washer fits. If the deck is a single laminate, flip the washer so that it bulges outwards. (See drawing)



18. Attach the couplings to the end supports with M8x50 bolts and M8 locking nuts.
19. Fit stoppers and end supports to the track again. Bolt the end supports to the deck with M8x50 hexagonal nuts, washers for the upper side and underside of the deck and a dished washer. Depending on the thickness of the deck, these bolts may need to be shortened. Make sure the thread obtains at least 10mm purchase on the couplings, but not so long that they reach the bottom. Seal with silicon-rubber.
20. Tighten all bolts thoroughly.

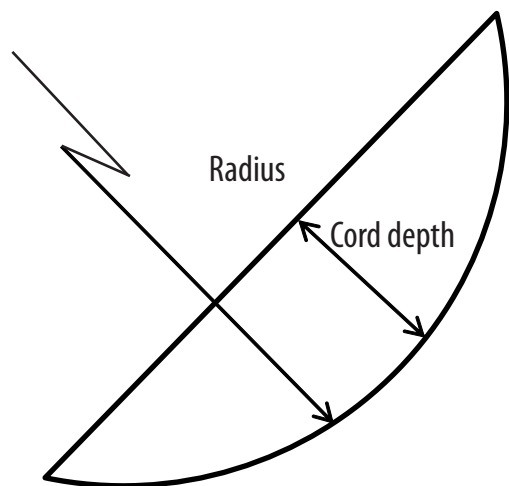
Track radius

The track in the standard kit has a radius of 3,4m and is 2,0m long.

To establish the suitable radius for your boat, do the following:

1. Measure the J-measurement, which is the distance between the tack's fitting on deck and the front of the mast.)
2. The radius should be 95 % of the J-measurement.
3. For radiuses over 3,4m (max 3,7m), the radius is altered by placing the track on the floor with the top facing down, and then applying your body weight on the track until the desired radius is obtained.

RADIUS (m)	CORD DEPTH (mm)
2,8	176
2,9	171
3,0	166
3,1	160
3,2	155
3,3	150
3,4	146
3,5	142
3,6	138
3,7	134
3,8	131
3,9	127
4,0	124

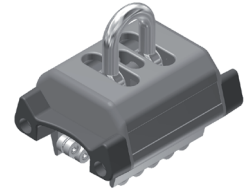


The standard system includes the following:

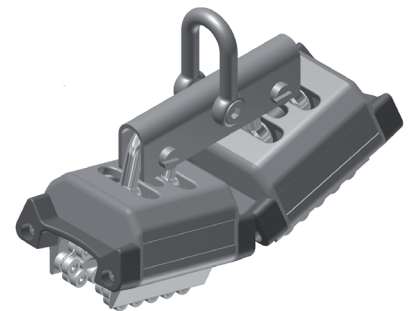
Item No	Pcs	Description	Part No
1	1	Sheet track, bent	T601201



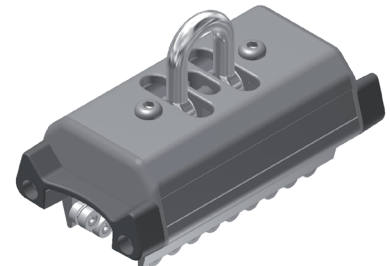
2	1	Extra short roll-link traveller with shackle. USE ONLY FOR T690101	T610112
---	---	--	---------



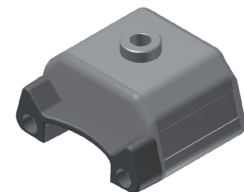
2	1	2 x Extra short roll-link traveller-car connected and with shackle. USE ONLY FOR T690102	T610112
---	---	--	---------



2	1	Short roll-link traveller with shackle. USE ONLY FOR T690103	T610112
---	---	--	---------



3	2	Stopper with rubber dampener	T620006
---	---	------------------------------	---------



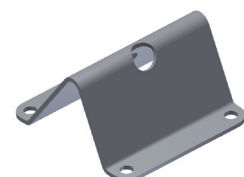
Self-tacking Jib fittings accessories T390100



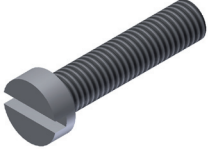

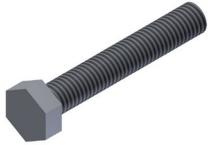





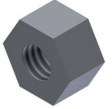
4	1	End support, small 25x1,5 left
---	---	--------------------------------

5	1	End support, small 25x1,5 right
---	---	---------------------------------



6	2	Middle clip
---	---	-------------



7	4	Coupling, small, for end support	
8	8	M6 x 30 bolt	
9	4	M8 x 35 bolt	
10	2	M8 x 40 countersunk bolt	
11	4	M8 x 50 hexagonal bolt, full length threads	
12	2	M8 x 70 hexagonal bolt	
13	4	Washer, between end support and deck	
14	4	Washer, below deck	
15	8	Washer, arched	
16	8	Washer for M6 bolt	
17	8	M6 Nylock locking nut	
19	8	M8 Nylock locking nut	